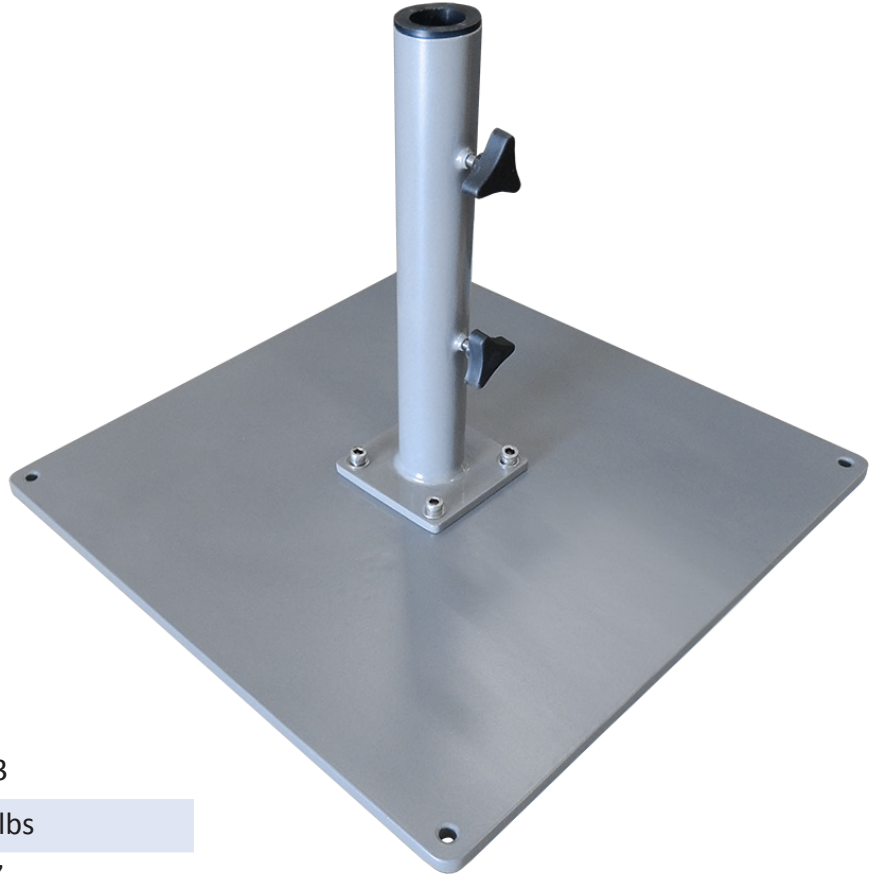




GREENCORNER[®]
Contract Patio Umbrellas

B23 Steel Low-Profile Base



Model:	B23
Product weight:	98 lbs
a. Width:	23"
b. Length:	23"
c. Height:	16.5"
d. Plate height:	0.63"
e. Tube inner diameter:	1.5" - 1.8"

For use on flat surfaces, this industrial-grade base features two-piece solid steel construction and drainage hole.

Base Dimensions Diagram

