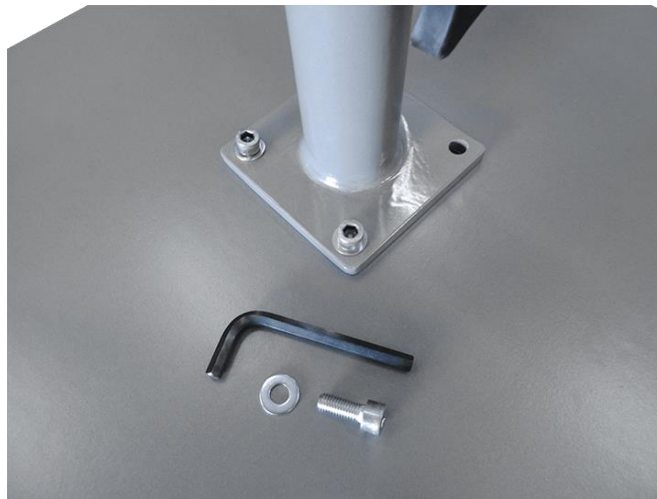


Bases With T12 and T13 Assembly

Contents:

- Low Profile or Composite Plate (in separate box)
- Base Tube (T12 or T13) (in separate box)
- 2 Black Tension Knobs (in tube box)
- Black Sizer Rings (3 Different Sizes) (in tube box)
- 4 Stainless Steel Hex Bolts (in tube box)
- 4 Stainless Steel Washers (in tube box)
- Hex Wrench (in tube box)



Instructions:

1. **WARNING:** Have no less than two people unboxing and assembling this base. The base is heavier than your average base, so unboxing and moving the plate around may cause injury.
2. Unbox your base carefully to not damage yourself nor the product in any way.
3. Select a flat and level stable location for your umbrella and move the plate there, keeping in mind the dimensions of your umbrella when open to ensure clearance.
4. Align the holes of the tube and the plate. (The low profile base has holes at the corners that are only used for optional wheels, which you can purchase from us.) Take the included stainless steel hardware, first laying the washer over the hole and then inserting the bolt. Tighten with the included hex wrench.
5. Once the base is installed, insert the umbrella into the base tube and orient the umbrella to your preferred position. Tighten the tension knobs to secure the umbrella in that position.

If you have any questions, or if you need additional components, please do not hesitate to contact Greencorner customer support at 888-428-0800!

greencorner.com
T – 888.428.0800
F – 407.859.1045
info@greencorner.com