

Contents:

2 Steel Plates, Steel Tube, 3 Knobs, Hardware

Needed:

Tools & Multiple People

Installation

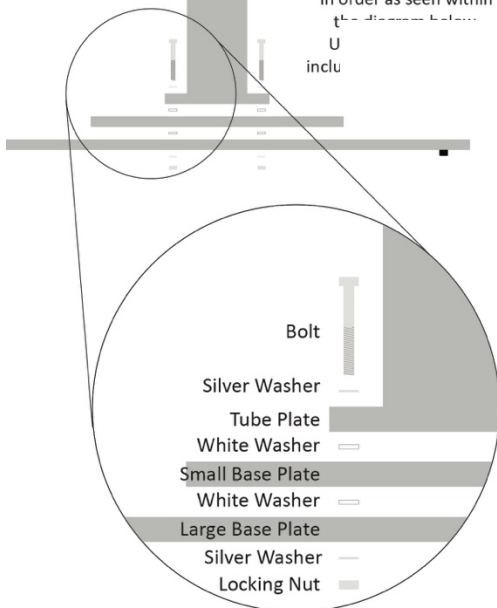
WARNING: This assembly will take SEVERAL people due to weight and difficulty.

1. Assemble the Base

Unbox the 3 boxes safely.

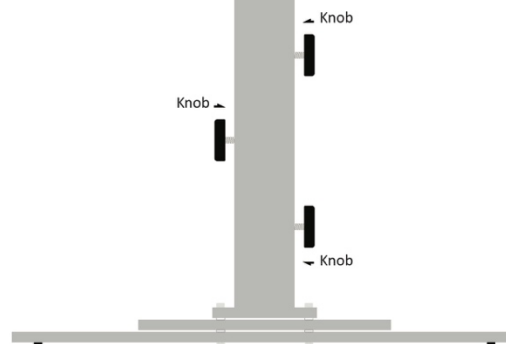
Align holes & hardware. Assembling on the side can be easier, as well as adding brush on rubber cement (not included) to the white washers to make them stick to plates. Please see assembly notes below.

Secure hardware tightly in order as seen within the diagram below.
U
inclu

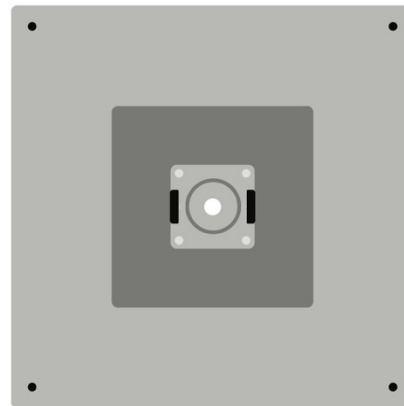


2. Ready Base for Umbrella

Screw in all three knobs loosely.

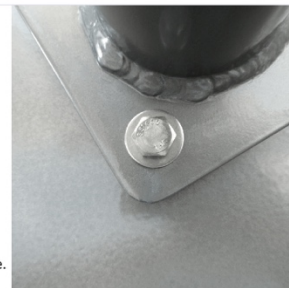


Top View (actual product is powder coated same color)



Assembly Notes:

We are not liable for any damage or injury during assembly. With that said, the easiest way to assemble seems to be on its side. For the photos, we had two people get the large plate on its side, with the stronger person (A) holding the large plate up by his legs. Then A held up the tube and the second person (B) got the hardware onto the tube. That can be seen to the left. Then, a third person (C) holds up the smaller plate inbetween the tube and large plate, while B leads the hardware through as A slowly leads the tube towards the plates and B tightened them. If some sticky component like brush on rubber cement is used for the white washers, this process becomes a little easier. We are suggesting the rubber cement due to it being temporary and not damaging to paint. After hardware is secure, all three people worked together to safely and slowly set the base down. It may be easier with more people.

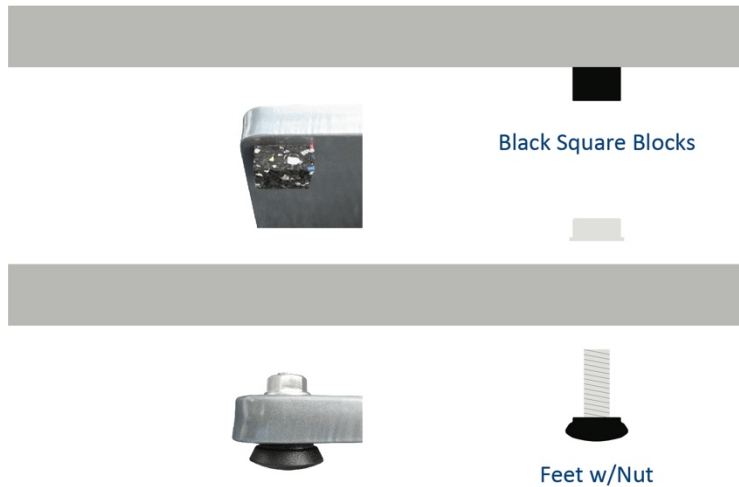


greencorner.com
407-851-7018
info@greencorner.com

Optional Feet

WARNING: This will take SEVERAL people due to weight & difficulty.

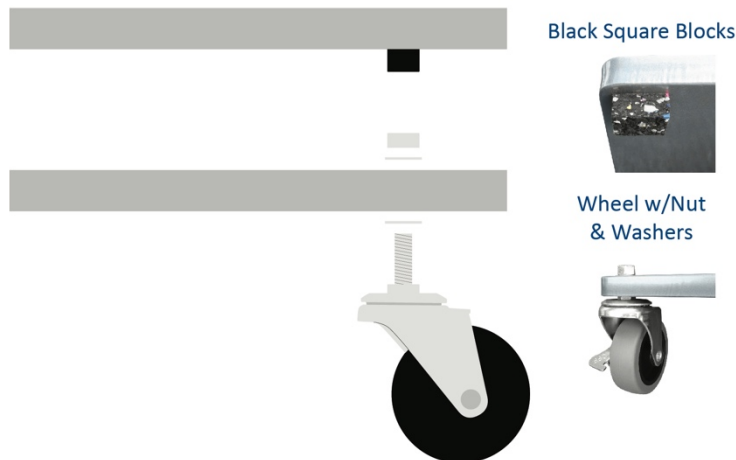
Remove using rubbing alcohol (not included; please follow all warning and directions on original packaging) all 4 black square blocks already on the lowest base plate under the corners. Thread each foot one at a time in from underneath and tighten nut securely on top.



Optional Wheels

WARNING: This will take SEVERAL people due to weight & difficulty.

Remove using rubbing alcohol (not included; please follow all warning and directions on original packaging) all 4 black square blocks already on the lowest base plate under the corners. Lock each wheel, to ensure as you install they won't move around easily. Thread each wheel w/washer one at a time in from underneath and tighten nut w/washer securely on top.



greencorner.com
407-851-7018
info@greencorner.com