

Contents:

Steel Tube, 3 Knobs, 2 Reducer Sticks

Needed:

Installation Hardware & Tools (Varies by Surface)

Deck Surfaces

(This is a suggestion, not guaranteed to work for your individual situation.)

1. Determine Surface & Prepare

Measure the thickness of the deck.
Deck Thickness" + 1.5" = Bolt Length Minimum

Purchase four hardware sets.
(4 bolts, 8 washers, and 4 nuts.)

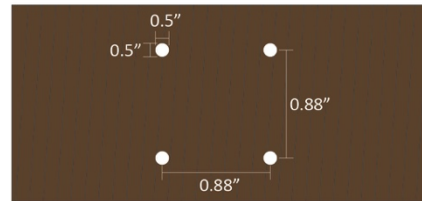
Purchase/rent tools including wrenches & drill.
(You may need a hammer drill.)



2. Drill Holes in Surface

Use the drill to pre-drill four quantity 0.5" holes into deck.

Be sure to space out and align properly.



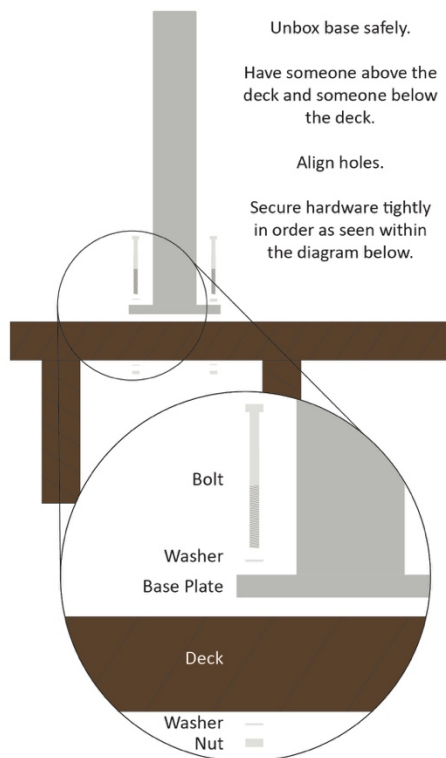
3. Bolt Anchor Mount In

Unbox base safely.

Have someone above the deck and someone below the deck.

Align holes.

Secure hardware tightly in order as seen within the diagram below.

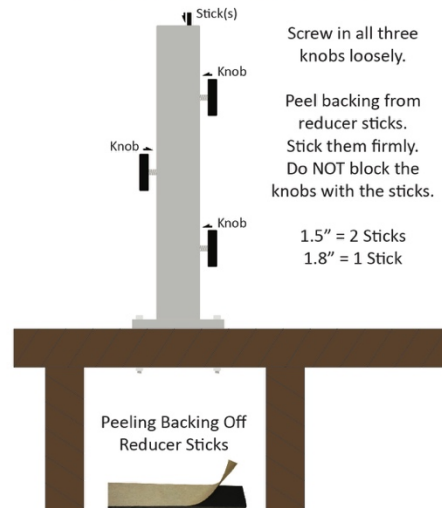


4. Ready Base for Umbrella

Screw in all three knobs loosely.

Peel backing from reducer sticks. Stick them firmly. Do NOT block the knobs with the sticks.

1.5" = 2 Sticks
1.8" = 1 Stick



1 Stick

2 Sticks (opposite sides)



greencorner.com

407-851-7018

info@greencorner.com

Concrete Surfaces

(This is a suggestion, not guaranteed to work for your individual situation.)

1. Determine Surface & Prepare

Measure the depth of the concrete, if possible. Typically 5.5" - 8" long wedge anchor bolts work, depending on concrete depth.

(This base is not suggested for concrete thinner than 5".)

Purchase four hardware sets. (4 wedge anchor bolts, 4 washers, and 4 nuts.)

Purchase/rent tools including a wrench & drill. (You will very likely need a hammer drill.)

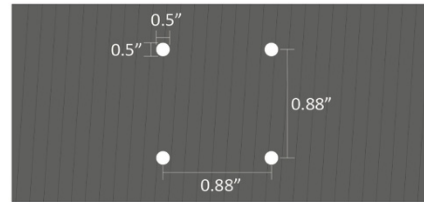
Depth in Inches"



2. Drill Holes in Surface

Use the drill to pre-drill four quantity 0.5" holes into deck.

Be sure to space out and align properly.



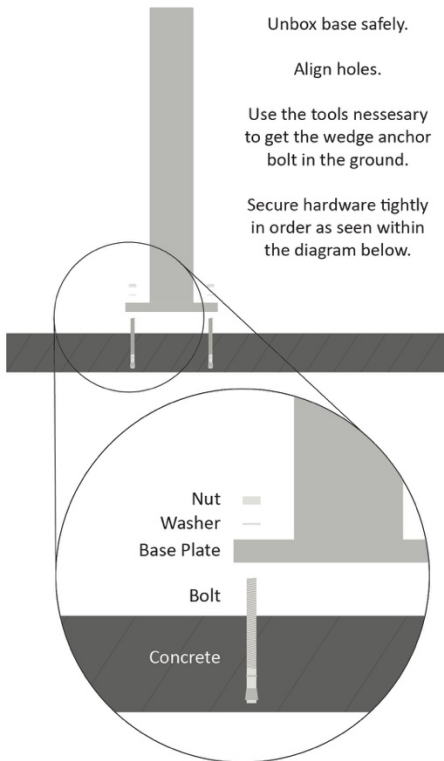
3. Bolt Anchor Mount In

Unbox base safely.

Align holes.

Use the tools necessary to get the wedge anchor bolt in the ground.

Secure hardware tightly in order as seen within the diagram below.

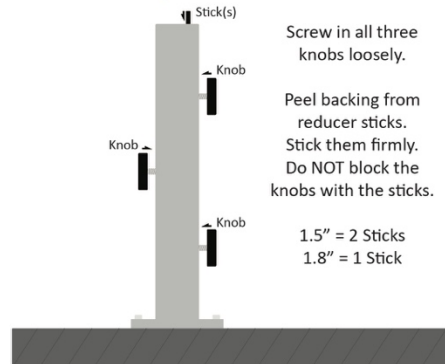


4. Ready Base for Umbrella

Screw in all three knobs loosely.

Peel backing from reducer sticks. Stick them firmly. Do NOT block the knobs with the sticks.

1.5" = 2 Sticks
1.8" = 1 Stick



Peeling Backing Off Reducer Sticks



1 Stick



2 Sticks (opposite sides)



CAUTION: We are not liable for improper installation nor any injuries during installation.

greencorner.com
407-851-7018
info@greencorner.com